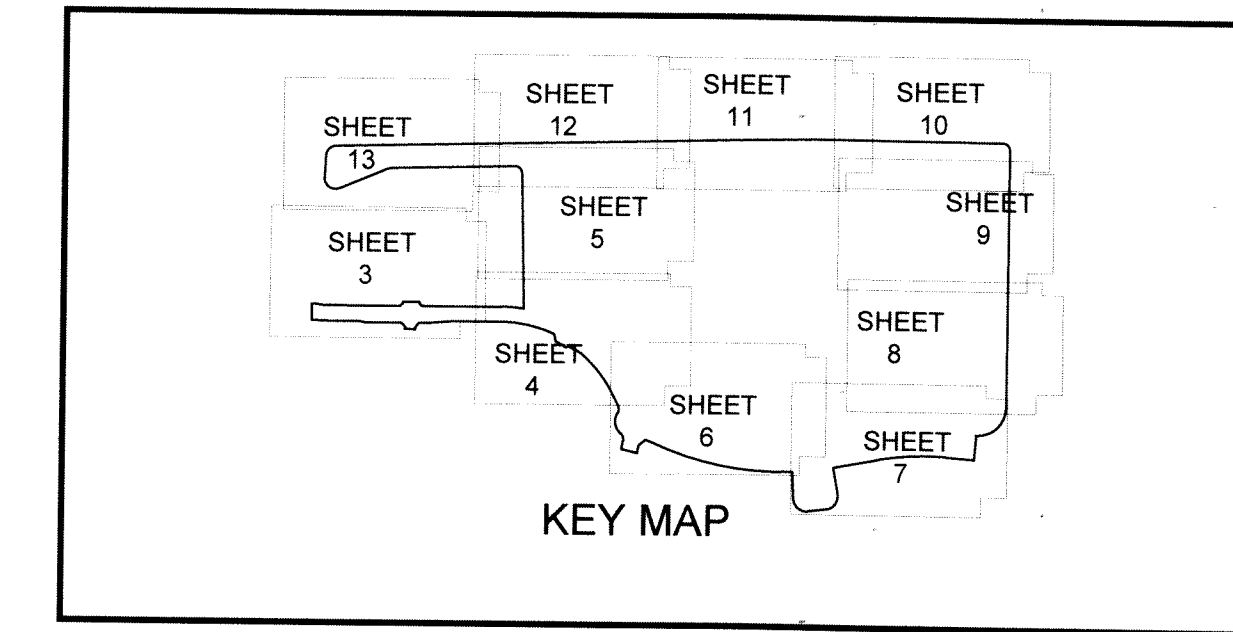


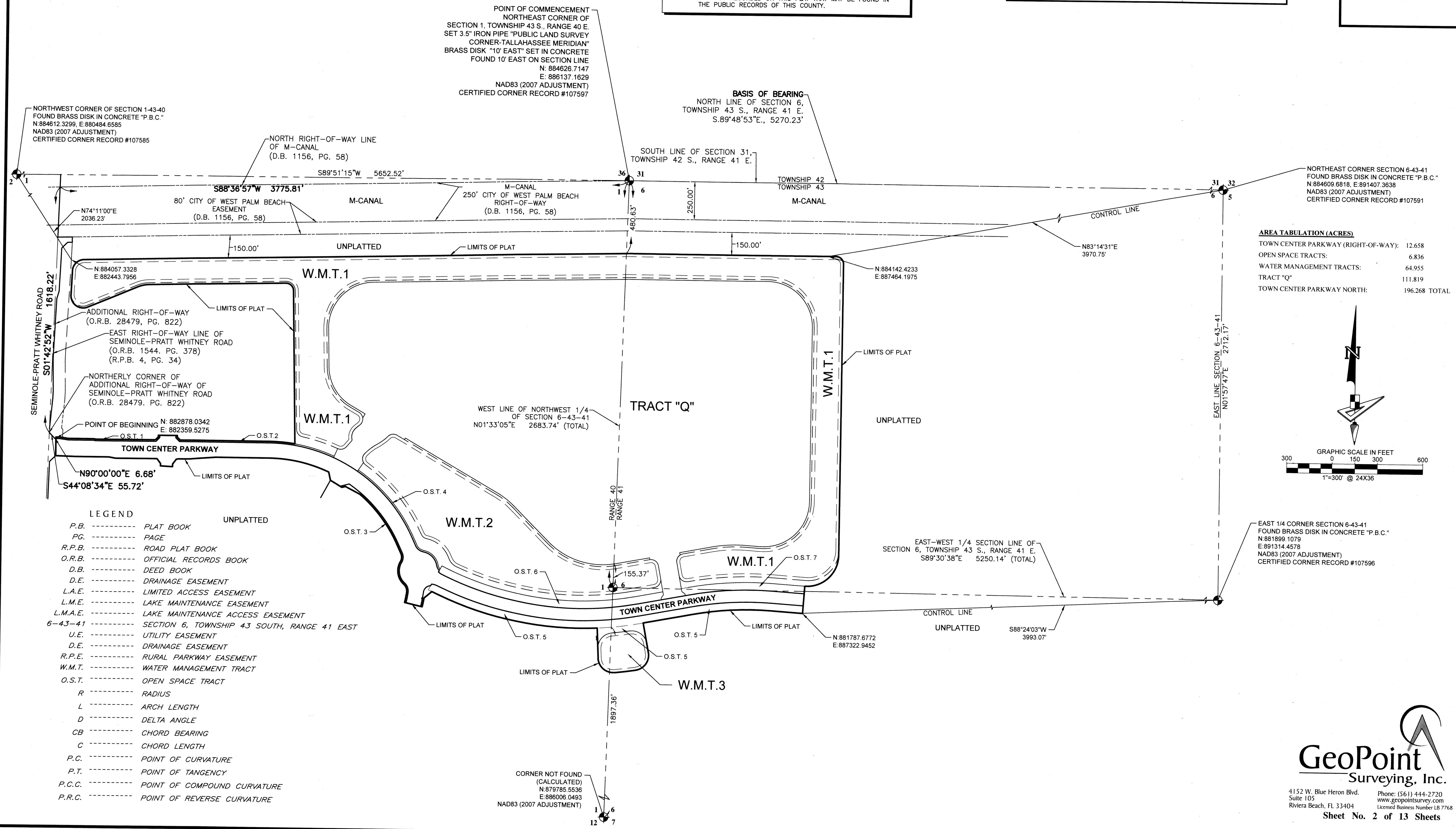
TOWN CENTER PARKWAY NORTH

BEING A PLAT OF A PORTION OF
SECTION 6, TOWNSHIP 43 SOUTH, RANGE 41 EAST,
AND SECTION 1, TOWNSHIP 43 SOUTH, RANGE 40 EAST,
CITY OF WESTLAKE, FLORIDA

107

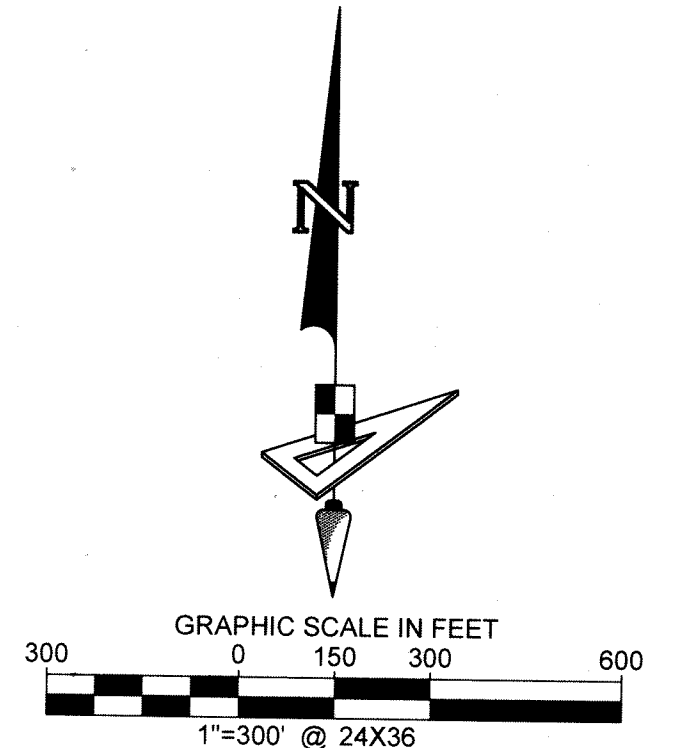


NOTICE: THIS PLAT, AS RECORDED IN ITS GRAPHIC FORM, IS THE OFFICIAL DEPICTION OF THE SUBDIVIDED LANDS DESCRIBED HEREIN AND WILL IN NO CIRCUMSTANCES BE SUPPLANTED IN AUTHORITY BY ANY OTHER GRAPHIC OR DIGITAL FORM OF THE PLAT. THERE MAY BE ADDITIONAL RESTRICTIONS THAT ARE NOT RECORDED ON THIS PLAT THAT MAY BE FOUND IN THE PUBLIC RECORDS OF THIS COUNTY.



AREA TABULATION (ACRES)

TOWN CENTER PARKWAY (RIGHT-OF-WAY):	12.658
OPEN SPACE TRACTS:	6.836
WATER MANAGEMENT TRACTS:	64.955
TRACT "Q"	111.819
TOWN CENTER PARKWAY NORTH:	196.268 TOTAL



LEGEND

P.B. -----	PLAT BOOK	UNPLATTED
PG. -----	PAGE	
R.P.B. -----	ROAD PLAT BOOK	
O.R.B. -----	OFFICIAL RECORDS BOOK	
D.B. -----	DEED BOOK	
D.E. -----	DRAINAGE EASEMENT	
L.A.E. -----	LIMITED ACCESS EASEMENT	
L.M.E. -----	LAKE MAINTENANCE EASEMENT	
L.M.A.E. -----	LAKE MAINTENANCE ACCESS EASEMENT	
6-43-41	SECTION 6, TOWNSHIP 43 SOUTH, RANGE 41 EAST	
U.E. -----	UTILITY EASEMENT	
D.E. -----	DRAINAGE EASEMENT	
R.P.E. -----	RURAL PARKWAY EASEMENT	
W.M.T. -----	WATER MANAGEMENT TRACT	
O.S.T. -----	OPEN SPACE TRACT	
R -----	RADIUS	
L -----	ARCH LENGTH	
D -----	DELTA ANGLE	
CB -----	CHORD BEARING	
C -----	CHORD LENGTH	
P.C. -----	POINT OF CURVATURE	
P.T. -----	POINT OF TANGENCY	
P.C.C. -----	POINT OF COMPOUND CURVATURE	
P.R.C. -----	POINT OF REVERSE CURVATURE	

EAST 1/4 CORNER SECTION 6-43-41
FOUND BRASS DISK IN CONCRETE "P.B.C."
N:881899.1079
E:891314.4578
NAD83 (2007 ADJUSTMENT)
CERTIFIED CORNER RECORD #107596

GeoPoint
Surveying, Inc.

4152 W. Blue Heron Blvd. Phone: (561) 444-2720
Suite 105 www.geopointsurvey.com
Riviera Beach, FL 33404 Licensed Business Number LB 7768

Sheet No. 2 of 13 Sheets